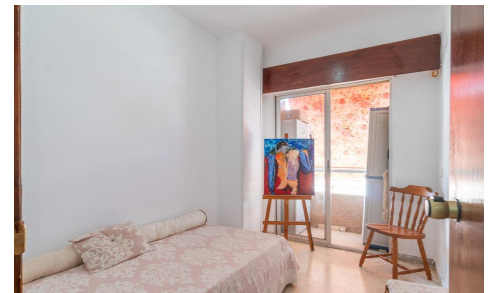


KPF6866B



**Apartment in Torrevieja**

**€169,000**



3



1



86m<sup>2</sup>



N/A



N/A

Apartment with sea views 200 metres from the beach in Curva del Palangre – Torrevieja~~Discover this fantastic apartment located in one of the most sought-after areas of Torrevieja, in the Curva del Palangre area, just 200 metres from the sea and very close to Los Locos Beach and the seafront promenade.~~The property has 86 m2 built area, is ready to move into, and is located on the sixth...(Ask for More Details!)

